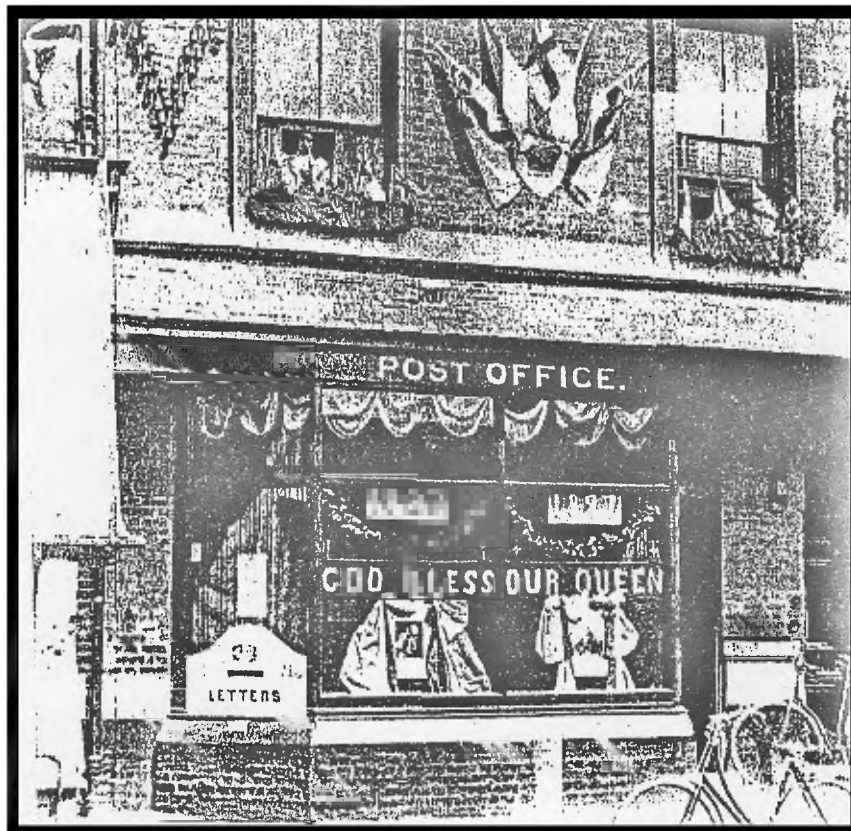




**KENT FEDERATION
of
PHILATELIC SOCIETIES**



*BECKENHAM POST OFFICE
in Albemarle Road in 1897.
It was decorated for Queen Victoria's
Diamond Jubilee.*

No. 194

FEBRUARY 2014

BULLETIN

PLEASE VIEW THE KENT PHILATELY WEBSITE

<http://kentphilately.weebly.com>

It supports the K.F.P.S.

I had hoped to wish you all a Happy New Year, but sadly we have lost Alan Bennett (Sidcup), Derek Martin, Irene Porter and Diana Mittel (All of Romney Marsh), Martin Lynes (Maidstone) and Henry Hupfield, (Tunbridge Wells), and of course, we have no younger replacements. We offer our condolences to their clubs and their families.

XXXXXXXXXXXXXXXXXXXXX

In this issue we have reports from 18 of our affiliated clubs, and my apologies for omitting one from the Medway Towns P.S. - so four have missed out ! Cliff Hurst paints a gloomy picture of the future of philately in Kent, but he is unfortunately close to the truth, and Brian Stonestreet raises an interesting point on another matter. Your views would be appreciated.

XXXXXXXXXXXXXXXXXXXXX ;

The Autumn Rally at East Malling Village Hall went well, and we now look forward to our Spring Rally at Beckenham on March 30th, but PLEASE NOTE, it is on a SUNDAY, after the booking was made, the school had to rearrange an event of theirs, so the Bromley & Beckenham PS had the choice of hosting it on another date or cancelling it. However it now falls on the day we start British Summer time this year, so you will lose an hour, so set your alarms early. At least you can go home in daylight ! See you there, bring a colleague or two.

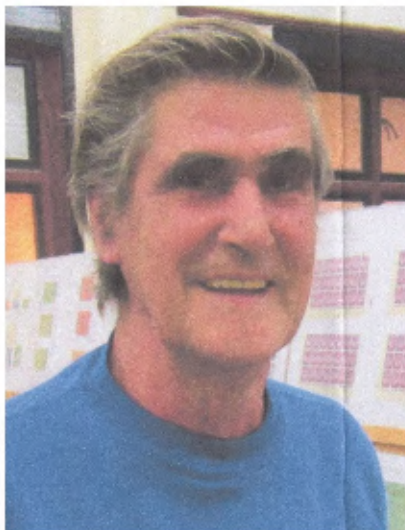
XXXXXXXXXX (XXX

The Bexley P.S. are celebrating their 50th Anniversary this year and on May 17th they are holding an all day stamp fair at their usual venue, the Freemantle Hall in Bexley village. I understand there is street car parking nearby, (Free ?)

XXXX XXXX ;

A Photographer was at a recent BEXLEY P.S. meeting. Here we have snaps of two of their members, Peter Boyd and Graham Brown with 2 young supporters.

Peter and John Topcliffe gave 'debut' displays to the Society on the 20th September, see the report on page 17 of this issue. Peter showed "G.B. Wildings" and John showed "Maltese Cross Cancellations". Well done both.



DIARY DATES 2014

Remember, if you are planning to visit any of the events listed here, you are advised to check that neither the date, nor the venue have changed, BEFORE you travel.

NEXT CUT-OFF DATE for the MAY 2014 issue of this BULLETIN needs to be the 10th APRIL 2014. Do PLEASE let me have YOUR CLUBS NEWS, or any other items for inclusion in good time. I sometimes start assembling pages before the cut-off date, so any early contributions are welcome. THANK YOU ! PJOK.

Check these dates BEFORE booking your holidays, so that you don't miss the events.

- FEB 9 Collectors Fair (Stamps & various items) Kings Hall, Herne Bay, CT6 6BA
FEB 14 Strand Stamp Fair Royal National Hotel, Russell Sq, London
FEB 15 Chris Rapley Stamp & Postcard Fair. Carmel Hall, Sittingbourne, ME10 1JB
FEB 19/22 Spring Stampex (Thematic & P/Cs), Design Centre, Islington, London. N1.
MAR 1 Stamp & Postcard Fair, Azelia Hall, Croydon Rd, Beckenham
MAR 2 Sevenoaks Stamp Fair Knole Academy, Bradbourne Vale Rd,
MAR 15 Chris Rapley Fair. Sittingbourne. ME10 1JB
MAR 30 KENT FEDERATION SPRING RALLY Hosted by Bromley &
Beckenham Philatelic Society at Langley Park Boys School, Beckenham
APR 5 Stamp & Postcard Fair. Azelia Hall, Beckenham.
APR 12 Maidstone & Mid-Kent P/S Stamp Fair, Grove Green Comm Centre ME14 5QT
APR 13 Collectors Fair. Kings Hall, Herne Bay, CT6 6BA
APR 18 Chris Rapley Fair. Masonic Hall, Rochester. ME1 1QD
APR 25 Strand Stamp Fair Royal National Hotel, London WC1
APR 26 Chris Rapley Fair. Sittingbourne.
APR 26 Stamp Fair. Azelia Hall, Beckenham.
MAY 4 Sevenoaks Stamp Fair, Knole Academy, Bradbourne Vale Road.
MAY 5 Stamp & P/C Fair (hosts T/Wells PS) All Saints Hall, Crowborough, TN6 1ED
MAY 16 Strand Stamp Fair. Royal National Hotel, London WC1

MAY 17 BEXLEY STAMP CLUB

50th ANNIVERSARY STAMP FAIR. 10am - 4pm.

FREMANTLE HALL. HIGH STREET. BEXLEY VILLAGE. DA5 1AA

- MAY 17 Chris Rapley Fair. Sittingbourne.
JUN 1 Chris Rapley Fair (Meadows School, London Rd, Southborough, T/Wells, TN4 0RJ
JUN 7 Stamp Fair. Azelia Hall, Beckenham.
JUN 8 Collectors Fair. Kings Hall, Herne Bay CT6 6BA
JUN 13 Strand Stamp Fair Royal National Hotel, London WC1
JUN 21 Chris Rapley Fair Sittingbourne.
JUN 28 KENT FEDERATION DAY / A.G.M. Hosted by Federation at Ashford
School, East Hill, Hythe Rd, Ashford TN24 8PB
JUL 5 Stamp Fair, Azelia Hall, Beckenham
JUL 11 Strand Stamp Fair Royal National Hotel, London WC1
JUL 11/14 British Phil. Congress (?) Provisional date - Ypres in Belgium!
JUL 19 Chris Rapley Fair. Sittingbourne.
AUG 1 Strand Stamp Fair. Royal National Hotel, London WC1
AUG 2 Stamp Fair. Azelia Hall, Beckenham.
AUG 16 Chris Rapley Fair. Sittingbourne.
SEP 6 Stamp Fair. Azelia Hall, Beckenham.
SEP 7 Sevenoaks Stamp Fair Knole Academy, Bradbourne Vale Road.
SEP 17/20 Autumn Stampex (Germany & Cols) Design Centre, Islington, London. N1.

MORE DATES FOR YOUR 2014 DIARY !

SEP 20 Chris Rapley Fair	Sittingbourne.
OCT 4 KENT FEDERATION AUTUMN RALLY	Hosted by Federation at Dartford Grammar School for Boys, at West Hill, Dartford. DA1 2HW
OCT 4 Stamp Fair.	Azelia Hall, Beckenham.
OCT 10 Strand Stamp Fair.	Royal National Hotel, London WC1
OCT 12 Chris Rapley Fair.	Southborough, Tunbridge Wells.
NOV 1 Stamp Fair.	Azelia Hall, Beckenham.
NOV 14 Strand Stamp Fair.	Royal National Hotel, London WC1
NOV 15 Chris Rapley Fair.	Sittingbourne.
NOV 16 Sevenoaks Stamp Fair	Knole Academy, Bradbourne Vale Road.
DEC 6 Stamp Fair.	Azelia Hall, Beckenham.
DEC 7 Chris Rapley Fair.	Rochester.
DEC 20 Chris Rapley Fair.	Sittingbourne.

E&O.E.

Make a note in your diary NOW

Future Events - 2015 (actual dates still awaited)

Spring Stampex probably in February at Design Centre, London.
 London 2015 is scheduled for 13th-16th May, also at the Design Centre.
 Autumn Stampex probably in September, again at the Design Centre.
 For more information, try www.abps.org.uk on the "Exhibiting" tab.

 We have two 'Kent based' stamp & philatelic material Auctions in the County, namely MARTELLO PHILATELIC AUCTIONS, (Office Telephone no. is 01303 - 269712 or E-mail : info@martelloauctions.com) They hold their auctions at The Holiday Inn, Canterbury Road, Ashford TN24 8QQ. Their dates in 2014 are 7th February, 2nd May, 25th July, and 24th October. The other is T & T AUCTIONS LTD which use St. Marks Hall, Bayham Road, Tunbridge Wells TN2 5LX Their dates in 2014 are 25th January, 22nd March, 26th April, 28th June, 9th August, 20th September, the 1st November and 13th December. (The office telephone no is 01892 - 529898 or you can E-mail them on info@tandtauctions.com.)



Some One Liners ! Space is a dangerous place, especially between your ears !
 Even if you are on the right track, you'll get run over if you just sit there !
 You cannot climb the ladder of success with your hands in your pockets !

ROBERT UDEN

PHILATELY

**Specialising in Zeppelin Flown Mail,
 German, Austrian & French Stamps
 Also British Commonwealth**

**P.O. Box 183, Hythe, Kent. CT21 4GP
 Telephone: 01303 238807**



COMPETITION RESULTS - AUTUMN RALLY 2013

Three competitions were held at East Malling Village Hall on 28th September

<u>THE PARNALL CUP</u>		8 page Thematic competition	(5 entries)
1 st	CINQUE PORTS PS	Submarines & Submersibles	77 points
2 nd	Cinque Ports PS	The Hawker Aircraft	75 “
3 rd	Malling SC	The Great Little Trains of Wales	72 “

<u>THE FRANCIS FIELD TROPHY</u>		8 page Aerophilately comp.	(6 entries)
1 st	CINQUE PORTS PS	Glider Mail	82 points
2 nd	Maidstone & Mid-Kent PS	Pioneer Air mails of New Zealand	81 “
3 rd	Malling SC	Lundy Island, The Atlantic Coast	78 “
		Air Service, 1936 ‘Large Map’ issue,	

<u>THE ROY GARLAND TROPHY</u>		16 page Traditional competition	(4 entries)
1 st	JOHN SHAW (Eltham & Woolwich PS)	South Africa, A study of the 5/- Rotogravure Ox Wagon pictorial issue 1933/54.	81 points
2 nd	Brian Stonestreet (Maidstone & Mid-Kent PS)	New Zealand QEII ‘Officials’	65 “
3 rd	Paul Cahill (Cinque Ports PS)	Hungary - Airmail Issues 1918/66	63 “

Our thanks to the Judges, Brian Coates (Midland Federation) and Brian Thurlow (Middlesex Federation) for their time joining us on the day. Thanks also to the Competitors for their support for these competitions, which do help to make the Rallies successful, without you, where would we be ?

XX

THE B.T.A. ‘INTERFED’ TEAM TROPHY - 12 OCTOBER 2013
 ‘Kent’ entered a team in the above competition, held at Ardingly at the Sussex Federation Event, and scoring 233 points WON the Healy & Wise Silver Salver
 Our team was Erica Banks (Bromley & Beckenham PS) with “St.George” - 75 points, Grahame Boutle (Bromley & Beckenham PS) “Man Under The Sea” 81 points, and Michael Thompson (Malling S.C.) - “The Story of Archery - The Deadly Bow and Arrow” 77 points, Well done our team ! The other teams were Sussex and Surrey. Brian Sole of the B.T.A. was the Judge.

XX

DETAILS OF OUR NEXT COMPETITIONS ON 30th MARCH
 ARE OVERLEAF. WE AGAIN HOST THE DAWES CUP

XX
 Are You Getting Old When You Applaud the Past and Lament the Present ?
 XX

OUR FUTURE COMPETITION DATES - 2014 and 2015

<u>2014</u>	<u>SPRING</u>	<u>SUMMER</u>	<u>AUTUMN</u>
8 Pages	Traditional -	Cinderella Postal History	Thematic Aerophilatelic
16 pages	Cinderella	Open Philately	Postal History

The 2015 competitions:

<u>Note</u>	The 8 page competitions will be in the same order each year,		
16 pages	Thematic	Aerophilately	Traditional

The six 16 page competitions are held over a TWO YEAR term, but the five 8 page competitions are held every year. When the DAWES CUP competition (held in the Spring) is hosted by Kent we need the space to exhibit the entries so only one of our 8 page comps is held then. In other years, the host club is invited to mount a display of its choosing.

XX

THE DAWES CUP - 2014 is being hosted by Kent again this year, and the entries (and results) will be on show at the SPRING RALLY, hosted by the Bromley & Beckenham PS on SUNDAY 30th March at Langley Park Boys School, South Eden Park Road, Beckenham BR3 3BP Following a change in the rules, teams will consist of FOUR members per County, not five as in previous years. The KENT TEAM which has been Selected is as follows:

AEROPHILATELY

John Crowe (Sevenoaks) Pioneer Flights of the England to Australia Route

Grahame Boutle (Bromley & Bec) Imperial Airways S23 "C" Class Flying Boat
Crashes

TRADITIONAL

John Shaw (Eltham & Woolwich) South Africa - A study of the 5/- Rotogravure
Ox Wagon Pictorial Issue 1933-1954

POSTAL HISTORY

Ron Burn (Bromley & Bec) Tristan da Cunha World War II

We wish the team every success !

XX

THE NATIONAL INTER-FED COMPETITION 2014 is being held in conjunction with STAMPEX (19th-22nd February) and the Kent team (of 3) is John Crowe, John Shaw, and Colin Tobitt, (Eltham & Woolwich PS), JC and JS will show the same entry as for the Dawes Cup (see above). Colin will show 'Austria to Switzerland Concessionary Cross Border Inflation Rates 1921-1925'. We also wish them the Best of Luck for this competition.

XX

G.B. NEW ISSUES

Apparently this is the Chinese (or Lunar) 'Year of the Horse' and the Royal Mail have just issued (on February 4th) a set of six stamps featuring 'working horses' that we might see in the U.K., two are the 1st class values, two are for 88p and two are rated at £1.28 each. (Despite a report that from 2013, they intended to include a 2nd class value in such sets, they don't seem to have followed up that idea!) They depict, Riding for the Disabled, the Kings Troop Ceremonial Horses, two Dray Horses, two Royal Mews Carriage Horses, two Police Horses and a Forestry Horse. The total cost for the basic set is £5.52. Also on sale is a Generic Sheet of 20 small blue 1st class stamps with Chinese Horse illustrations alongside. (£20).

'WORKING HORSES'



POST & GO STAMPS

A new series of these stamps is to be issued on February 19th, which shows various Spring flowers on the six 1st class stamps. Although the names of the flowers are not shown on the stamps, they are fully described on the Carrier Card issued with a full set. Although the general public don't seem to use these very often (I rarely get any on my mail) The Post Office do seem to find them a useful money spinner - they have 11 'special' issues in 2014 at various shows around the Country. Obviously some collectors are keen.

'SPRING BLOOMS'



MORE HORSES A special STAMPEX "Smilers" sheet with 10 first class small 'red seal' stamps has ten different horse illustrations alongside. If you have an interest in horses, this could make a nice souvenir or gift.

POST OFFICE TRAINING SCHOOL STAMPS

If you have an interest in these, there is an article written by Douglas Myall in the January 2014 British Philatelic Bulletin which gives a fair amount of information which you probably won't find elsewhere. This includes the vertical & horizontal, plus the "School Specimen" overprints



SOCIETY NEWS ROUND UP (1)

Eltham & Woolwich Stamp Club. Our first meeting of the 2013-14 season was our usual 'Members Evening' which was attended by 13 members, 6 of whom gave small displays. These included John Shaw (KFPS President) who showed Jamaica, with high values and some rare 'specimen' stamps, Colin Tobitt (KFPS Treasurer) displayed scarce German Booklet stamps and covers used in Austria. Cliff Hurst (our Chairman) showed a nice collection of rare German Prisoners money for use solely within the prison camp. Harry Layne (our Press Officer) displayed Cocos Keeling Islands covers from the early 1950's, used with Malaya adhesives and also the early Alphabet III 1d stars issues (GB ?), together with double and triple cancellations.



Two other members, Terry Cawtheray and Roy Martin also showed a sprinkling of items from their collections, including stamps showing the members photo. It was also announced that one of our older cherished members, Eric Pankhurst, who had been a very active member for many decades, had passed away. The club stood for a minute in memory of Eric, he will be sadly missed and we send our condolences to his family.

On September 26th we had our first auction, with many items knocked down at bargain prices. Then on October 10th we welcomed Croydon PS. but due to unforeseen circumstances Mr Ian Nutley shouldered the meeting alone, with a lovely display from his Zeppelin collection, including Postal and Propaganda Forgeries of WWII, containing some very scarce items, much enjoyed by the 14 members present. We had a visit from Mr D Mauri on October 24th with A rather unusual display entitled "American Civil War", which included many very informative covers and letters, plus a good selection of the Confederate stamps. Mr Mauri knew his subject well, and as one member commented "you don't find this stuff in books" - a lovely evenings display enjoyed by all present. On November 7th, our Chairman, Cliff Hurst displayed Canadian First Flight covers, stamps and postcards, with many rare and unusual items worthy of much better praise than can be given here. Suffice to say that members present were absolutely captivated by the 180 sheets shown. Well done Cliff. Mr B. Stalker visited us on December 5th, showing his collection of "Labrador Coastal Mail Services" - Club Programme Secretaries should note that this is one of those "Not to be Missed" collections, which include a personally researched history of the 'Mail Boats' which operated around Labrador - there being no roads or railways. There are many scarce items consisting of mainly covers and cards. A very interesting and knowledgeable display enjoyed by all present. To end the calendar year we had our Christmas Social on the 10th December, with the usual cakes, pies and wine on offer. The first meeting of 2014 will be on January 9th, and we send Best Wishes to everyone for the New Year. If you have any books you would care to circulate in our packet, please contact our Packet Secretary, via our club Hon Secretary, Ray Houghton (Details on page 2). We meet at the Community Centre, Eltham High Street, 7.30 for 8pm start, usually on the 1st & 3rd Thursday's of each month.

A WET OUTLOOK ? I can not swim, but was delighted when on a visit to have new glasses, the Optician told me that I "would be able to do anything in the new glasses, even swim !" *****